



SINGLE & THREE PHASE HIGH CURRENT BRIDGES – CB & CT SERIES

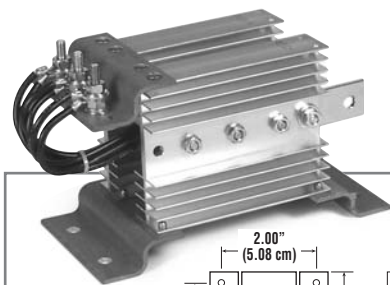
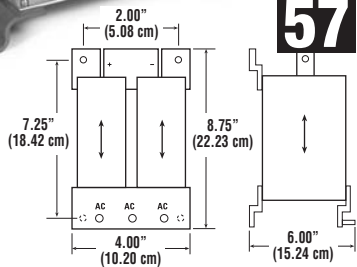


FIGURE 57



CKE Number	Repetitive Peak Reverse Voltage V_{RRM} Per Leg (Volts)	Average Forward Current Max $I_{F(AV)} @ 50^\circ$ A (Amps)	Maximum Forward Voltage Drop $V_f @ I_f$ Per Leg (Volts)	Maximum Reverse Current $I_r @ V_{RRM} @ 25^\circ C$ milliAmps	Maximum Surge Current $I_{FSM} (8.3ms)$ A (Amps)
------------	---	---	--	--	--

CT50 Series (Three Phase)

Figure 57

CT50G2AA40	400	50	1.50	1.0	500
CT50G2AA60	600	50	1.50	1.0	500
CT50G2AA80	800	50	1.50	1.0	500
CT50G2AA100	1000	50	1.50	1.0	500
CT50G2AA120	1200	50	1.50	1.0	500

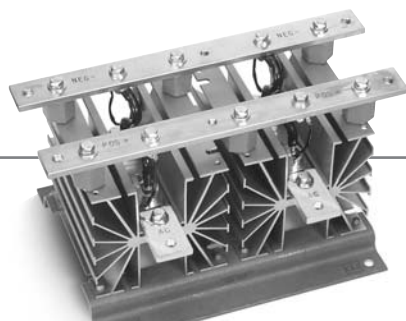
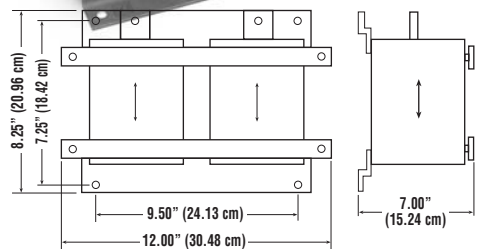


FIGURE 53



CB120 Series (Single Phase)

Figure 53

CB120K2AA40	400	120	1.50	1.0	1200
CB120K2AA60	600	120	1.50	1.0	1200
CB120K2AA80	800	120	1.50	1.0	1200
CB120K2AA100	1000	120	1.50	1.0	1200
CB120K2AA120	1200	120	1.50	1.0	1200

CB200 Series (Single Phase)

Figure 53

CB200K2AA40	400	200	1.50	1.0	3000
CB200K2AA60	600	200	1.50	1.0	3000
CB200K2AA80	800	200	1.50	1.0	3000
CB200K2AA100	1000	200	1.50	1.0	3000
CB200K2AA120	1200	200	1.50	1.0	3000

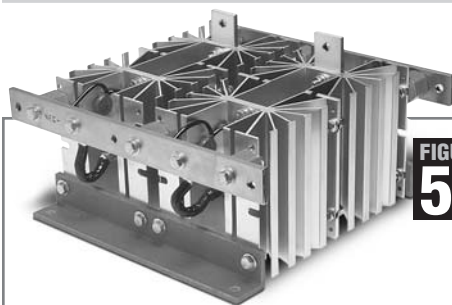
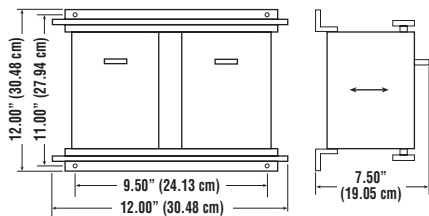


FIGURE 55



CB250 Series (Single Phase)

Figure 55

CB250K4AA40	400	250	1.50	1.0	3600
CB250K4AA60	600	250	1.50	1.0	3600
CB250K4AA80	800	250	1.50	1.0	3600
CB250K4AA100	1000	250	1.50	1.0	3600
CB250K4AA120	1200	250	1.50	1.0	3600
CB250K4AA160	1600	250	1.50	1.0	3600
CB250K4AA200	2000	250	1.50	1.0	3600

CB300 Series (Single Phase)

Figure 55

CB300K4AA40	400	300	1.50	1.0	6850
CB300K4AA60	600	300	1.50	1.0	6850
CB300K4AA80	800	300	1.50	1.0	6850
CB300K4AA100	1000	300	1.50	1.0	6850
CB300K4AA120	1200	300	1.50	1.0	6850
CB300K4AA160	1600	300	1.50	1.0	6850

BRIDGES